



**U.S. National Ice Center**  
NOAA Satellite Operations Facility  
4231 Suitland Road  
Suitland, MD 20746

## **PRESS RELEASE**

### **FOR IMMEDIATE RELEASE**

Contact: LTJG Bryan R. Brasher, NOAA  
[NIC.PAO@noaa.gov](mailto:NIC.PAO@noaa.gov)  
301-817-3934

## **Iceberg B-09F Calves a New Iceberg in the South Atlantic Ocean**

25APR2019, Suitland, MD — On April 19th 2019, the U.S. National Ice Center (USNIC) named a new iceberg that calved from iceberg B-09F between the South Orkney Islands and South Georgia Island. B-09J is located at 57° 10' South, 41° 56' West in the South Atlantic Ocean. The iceberg measures 12 nautical miles on its longest axis and 1 nautical mile on its widest axis. The iceberg was discovered and confirmed by USNIC analyst Sofia Montalvo using the Sentinel-1A image below.

Iceberg names are derived from the Antarctic quadrant in which they were originally sighted. The quadrants are divided counter-clockwise in the following manner:

A = 0-90W (Bellingshausen/Weddell Sea)	C = 180-90E (Western Ross Sea/Wilkes land)
B = 90W-180 (Amundsen/Eastern Ross Sea)	D = 90E-0 (Amery/Eastern Weddell Sea)

When first sighted, an iceberg's point of origin is documented by USNIC. The letter of the quadrant, along with a sequential number, is assigned to the iceberg.

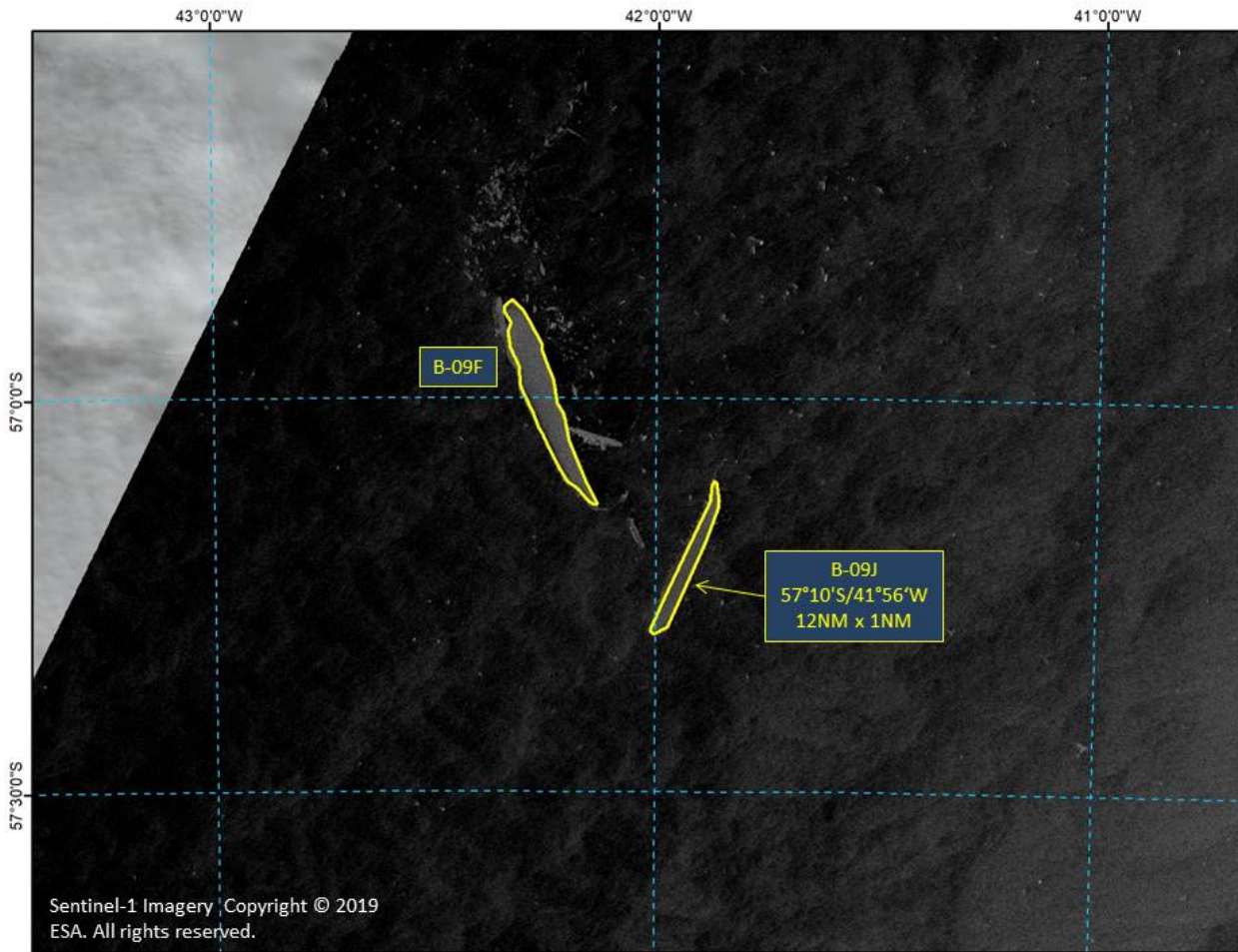


Figure 1: Sentinel-1A image from 20 April (0717Z) showing new iceberg B-09J with its parent iceberg B09F dated 20APR19 (Radarsat-2 Imagery Copyright © 2019 MacDonald, Dettwiler, and Associates Ltd.).

Iceberg positions are analyzed weekly and are available on the USNIC webpage at: <https://usicecenter.gov/Products/AntarcIcebergs>

For more information, please contact:

U.S. National Ice Center  
 Command Duty Officer  
 E-mail: [nic.cdo@noaa.gov](mailto:nic.cdo@noaa.gov)  
 Voice: (301) 943-6977  
 Twitter: @usnatice  
 Facebook: @usnatice



**The U.S. National Ice Center is a multi-agency center operated by the Navy, NOAA, and Coast Guard and provides global to tactical scale ice and snow products, ice forecasting, and related environmental intelligence services for the United States government.**